

- A1 N.M. WATSON 7-30-63 Int.#364
- 2 MRS. N.M. WATSON (RUTH) 6-29-77 Int.#1527
- 3 ↓ ↓
- 4 MACIE KING BOYKINS 1-19-82 Int.#2094

- B1 LILLIE M. HARBERT 6-5-64 Int.#440
- 2 BEULAH FREEMAN 8-13-77 Int.#1534
- 3 MACIE L. BOYKINS - INTERRED IN 76A#4 1-19-82 NOROOM!
- 4 ERALINA FRANKINS 5-31-72 Int.#1060

- C1 Julia Henderson 6-28-97 JULIA HENDERSON
- 2 ↓ ↓
Inter. Home Henderson 12/22/90
- 3 GEORGE BURDEN 3-22-69 Int.#793
- 4 JENNIE BURDEN 8-20-60 Int.#144

- D1
- 2 RAYFIELD HUNT 11-3-68 Int.#761
- 3 CALLIE JONES 1-28-61 Int.#168
- 4 DORA ROBINSON 11-12-63 Int.#391

12-10-1907

- A1 Lula McEWEN HEDGEMAN 12-8-1997 LULA MCEWEN
- 2 ↓ ↓
- 3 Inter. Mrs. McEwen 8/1/90 BISHOP MCEWEN
- 4 BISHOP A.B. MCEWEN 2-22-69 Int.#785

- B1
 - 2
 - 3
 - 4
- BISHOP MCEWEN
- ↓ ↓

- C1 CAROLYN NORFLEET 8-20-79 Int.#1236
- 2 JAMES R. NORFLEET 5-11-67 Int.#671
- 3 JOHNNIE L. DUKES 10-12-75 Int.#1840
- 4 ~~MARY~~ DUKES 3-6-71 Int.#057
(MARK)

- D1 Sara Thomas 2-1-95 H.L. WESTBROOK
- 2 H.L. WESTBROOK 12-6-67 Int.#655
- 3 MARY A. WESTBROOK 12-8-82 MARY WESTBROOK
- 4 GEORGE PERKINS 8-9-59 Int.#95

A

3 Edward Newsom
4 SELINA JONES 2-3-80 Int. # 1807 LUCENDIA AVERY HART

B1 LUCENDIA AVERY HART 6-30-82 Int. # LUCENDIA AVERY HART
2 BEN AVERY HART 5-19-74 Int. # 1216
3 MATTIE ROBINSON 10-24-78 Int. # 1649
4 RAGUS ROBINSON 5-23-76 Int. # 1432

C1 BESSIE THOMAS 7-21-77 Int. # 1532
2 JIMMIE THOMAS 8-31-70 Int. # 913
3 ROSIE LEE JONES 5-13-83 B# ROSIE JONES
4 PRINCE JONES 7-2-61 Int. # 196

D1 Edward Jones 8-22-98 98-087 PRINCE JONES
3 FANNIE DODSON 9-11-60 Int. # 146 CLARENCE DODSON
2 CLARENCE DODSON 10-25-86 B#
4. Someone listed in #4

A1

MATTIE JOHNSON
2 ALONZO JOHNSON 9-14-78 Int. # 1638
3 IDA MAE POWELL 11-8-70 Int. # 924
4 AUGUSTA DANIEL 4-15-69 Int. # 799

B1 EDITH T. MCKINNEY 1-29-94 # 9107 EDITH MCKINNEY D.Z.
2 Odell McKinney 3-27-99 INT 99044
3 Inter Nathaniel Murray April 91
4 RUTHIE D. MURRAY 6-8-88 B#

C1 SHIRLEY RODGERS 4-14-70 Int. # 887
2
3
4 Found Burial 8-1-88
WALTER SHANNON D.Z.
11-16-78
D.Z.

D1 SHERMAN TURNER 9-27-69 Int. # 843
2 WILLIE M. TURNER 11-29-69 Int. # 929
3 MARY SALVAGE 11-22-76 Int. # 1472
4 HOMER SAVAGE 2-27-88 INT. #

- A1 GOLEANNERSMITH 3-27-70 Int.#878
- 2 EVAN JOHNSON 2-18-61 Int.#173
- 3 ANDREW DANIEL 6-12-76 Int.#1487
- 4 EMMA DANIELS -3-9-85 B#

- B1 WILLIAM VAN PELT 12-20-70 Int.#935
- 2 ADDIE VAN PELT 5-18-69 Int.#810
- 3 MATTIE JACKSON 6-9-74 Int.#14200
- 4 SUSIE MITCHELL 5-12-77 Int.#1514

- C1 JOHNNIE COLEMAN 7-29-61 Int.#199
- 2 IDA B. COLEMAN 6-22-69 Int.#819
- 3 ZORA LORETT 5-12-73 Int.#1146
- 4 ADDIE COLEMAN 10-22-77 Int.#1514

- D1 SILVESTER WADDELL 3-15-64 Int.#420
- 2 WILL WADDELL 3-14-65 Int.#510
- 3 EVA L. STOVALL 1-4-63 Int.#337
- 4 JESSIE COOPER 4-4-85 B# MRS. JESSIE COOPER DZ.

introw

- A1 LAURA MARYWEATHER 7-25-71 Int.#984
- 2 WILLIE M. LOVING 7-6-75 Int.#139
- 3 JAMES ANNA "JIM" THOMPSON 6-13-81 B# Thompson
- 4 ADDIE L. BRADD DZ.

- B1 JOE W. COLEMAN 4-17-78 Int.#1581
- 2 LEAGER COLEMAN 8-26-84 B# MRS. LEAGER COLEMAN
- 3 ~~MARY E. COLEMAN 3-21-89 B#~~ MARY J. COLEMAN
- 4 HATTIE GREEN 10-31-70 Int.#622

- C1 Charles Price 7-22-06 ELGIN PRICE
- 2 Florida Price 4-5-97
- 3 ELGIN PRICE 12-15-83 B#
- 4 EDDIE REDMOND 5-8-72 Int.#1057

- D1 Lucille Price 10-11-03
- 2
- 3 Mamie L. Mahone 11-8-2000
- 4 Willie Bell Herndon 4/20/91

Eva Stovall
 Marker needs
 to be raised
 Dew 80D#3

- A1 } Annie Mason 3-22-08
- 2 } Willie Mason 9-28-02
- 3
- 4 MARY E. SHERRIL 7-11-71 Int.#981

D.I 2-13-64
 WILLIE MASON
 ↓ ↓
 JULIE PARKER

- B1
- 2 } KENNETH EARL MAXWELL 1-7-83 B#
- 3 } MARY Coleman 3-24-89 B#
- 4

JOHNNIE M. THOMAS

- C1 } LUCA M. BENSON 6-30-74 Int.#1226
- 2 } ↓ ↓
- 3 } ROBIN C. ROBINSON 1-31-76 Int.#1407
- 4 } WESLEY BOYD 6-11-73 Int.#1150

- D1 } IRENE KNOX 12-17-76 Int.#1478
- 2 } Alberta Lovett 6-15-06
- 3
- 4

C1
 2

DEED
 ISSUED to Linda Ayers - Williams

See 84-1 after on page 130

- A1) Portia Jones 3-29-03 *Portia Jones*
- 2) ESTELLA NELSON 11-12-84 B# 2483
- 3) Christine "Molly" Williams 2-12-05
- 4) MACK KING 7-21-79 Int.#1723

- B1) Bobbie Jean Briggs 8-12-94 *Bobbie Briggs*
- 2) *open*
- 3) *open*
- 4) Mrs. WILLIE B. WHITE 1-8-79 Int.#1667

- MICHAEL BRIGGS 12-24-87 B#
- C1) ~~MRS. WILLIE ARETHA COKER 9-23-85 B#~~
- 2) WILLIE ARETHA COKER 9-23-85 B#
- 3) ROY FANT BRIGGS 4-30-87 B#
- 4) ANNIE JORDAN 5-1-60 Int.#131

- D1) HARRIET HUNTER 12-19-71 Int.#1019
- 2) Albert Hunter 6-27-98 Int# 98-072
- 3) Kenneth L. Hunter 2-19-00 *ch.*
- 4) *Annice Jordan B# 04-24-60*

- B1
- 2
- 3) WILLIAM H. CARTER 6-13-87 B#
- 4) MRS. WILLIE B. WHITE 1-8-79 B#1667

- A1) *Beatrice Williamson* 2/5/91 BEATRICE WILLIAMSON
- 2) ODDIE O. WILLIAMSON 4-11-65 Int.#518
- 3) Rossie Toules 10-24-96 BEATRICE WILLIAMSON
- 4) FLORINE NORFOLK 5-22-71 Int.#966

- B1) CLARENCE LEE 1-6-87 B#
- 2) SUSIE LEE PONDexter 2-25-89 B# *ROSA JAMERSON*
- 3) HATTIE MATTHEWS 3-1-69 Int.#786
- 4) *DORA JEWEL*

- C1) JOE BETTY JIMERSON WARR 10-28-87 B# *BETTY JIMERSON*
- 2) WILLIE JIMERSON 7-2-69 Int.#820
- 3) ↓ ↓
- 4) ↓ ↓

- D1) CORA BROWN 2-20-75 Int.#1285
- 2) LOVE BROWN 4-18-65 Int.#520
- 3) GEORGE HUMPHREYS 8-21-66 Int.#625
- 4) ↓ ↓

A1

2

3 EARNEST JOHNSON 2-2-64 Int. #410

4 R.L. JONES 9-20-59 Int. #98

ERNEST SCRUGGS
MARY JOHNSON

B1

2

3 MADIE JONES 1-1-64 Int. #404

4

MARY FRANCE
LOUIS FRACE

LETTIE SHEPPARD (MRS)
REV. Q.C. BILLOPS 3-17-78 DJ

C1

2

3 BLANCH WINFREY WEBBER - 10-10-87 B#

4

BLANCHE (WINFREY) WEBBER
VANILLA BEATY

D1 VANILLA BEATY 4-11-66 Int. #596

2 ELDER J.B. BEATY 12-8-63 Int. #395

3 SUSIE SOLDIERS 4-2-60 Int. #124

4 MAMIE JONES 8-30-69 Int. #836 (X)

town

REV. ALBERT DANIEL JONES 8-7-85 B#

A1 SAVANNAH JONES 3-5-72 Int. #1038

2

3 SADIE J. LOVE 8-7-84 B#

4

ELDER T.R. LOVE

↓ ↓

B1 Mrs 11/16/91 Michael Deangelo Burns WILLIE COLEMAN

2 SILVESTER DEAN 5-17-70 Int. #892

3

Int. Nellie Nolan 6/7/90

4 SAM NOLAN 6-6-84 B#

SAM NOLAN

↓ ↓

C1 EMMA GREEN 9-23-73 Int. #1171

2

3

4 JAMES T. NOLAN 6-27-87 B#

WILLIE POLK

D1 MARY FRANCIS POLK 3-3-78 Int. #1574

2

3 WILLIE POLK 6-16-77 Int. #1520

7. 4 NELLIE NOLAN 8-4-59 Int. #94

Card Shows Int. # B-4

A1 MATILDA SMITH 2-3-68 Int.#700
 2 SENORA OWENS 10-10-74 Int.#1246
 3 MAGGI BALOVE 4-1-68 Int.#711
 4 HIL LEWIS 4-3-68

B1 PATSY EVANS 1-12-69 Int.#775
 2 GLADYS PURYEAR 3-23-69 Int.#794
 3 COZETTA FOSTER D.I.
 4 MARTHA GREER 5-22-85 B# MARTHA GREEN D.I.

C1 MRS. L.E. NELSON B# 8-25-83 JOE NELSON
 2 LOUIS NELSON JR. 10-2-93 # 9066 ↓ ↓
 3
 4 HARRY REID 4-19-80 Int.#1844

D1 PRESSIE WELLS
 2 LUCILLE BURTON 1-8-64 Int.#403
 3 SARAH RICHARDSON 5-16-65 Int.#526
 4 MACK RICHARDSON 4-8-67 Int.#668

A1
 2 MARY MCKINNEY 12-27-69 Int.#867
 3 Juanita Hart 9-22-96 INT OCIE LEE HART
 4 Ocie L. Hart 1-12-00 ↓ ↓

B1 NIMMIE H. BRACKEN 6-28-63 Int.#354
 2 DONNA HART BASKERVILLE 1-10-87 B# OCIE LEE HART
 3 SAMELLA HART WESTON 8-3-85 B# ↓ ↓
 4 DAVE MCKINNEY 10-1-77 Int.#1542

C1 EMMA ALLEN 11-29-87 B# EMMA ALLEN D.I.
 2 SUSAN Y. ALLEN 9-15-64 Int.#466
 3 VASHTI COLEMAN
 4 WALTER W. COLEMAN 1-12-64 Int.#405

D1 Lisa R. Williams Hart D.I. BEULAH BROWN
 2 Ella B. Jackson 9-4-93 # 9055 ↓ ↓
 3 BARBARA JACKSON 12-3-67 Int.#693
 4 ELDER C.J. JACKSON 11-3-73 Int.#1176

- A1 Janie Jones 7-23-02 JANIE JONES D.S.
- 2 LOUISE BECTON MOORE 6-28-7 Int.#977 DTHA LEONARD TRANS. TO -
FR. EDWARDS
- 3
- 4 NATHNIEL BECTON 7-10-66 Int.#616

- B1 Eula Lee Jeffery 12-1-01 EULA LEE JEFFRIES D.S.
- 2 Alice Coleman 6-2-01 ALICE COLEMAN D.S.
- 3 DOCK COLEMAN 10-31-71 Int.#1007
- 4 ALONZO SANDERS 12-24-85 B# CLEO SANDERS D.S.

- C1 ALBERTA NESBITT 10-5-61 Int.#909 ELATRIS WILBURN
- 2
- 3 RUTH REYNOLDS 9-14-69 Int.#840
- 4 GENEVA THURMAN 10 - -82 B#

- D1) WALTER BARKS
- 2) ↓ ↓
- 3)
- 4) BORDINA B. COLEMAN

- A1 EDWINA McDONALD 10-11-70 Int.#919
- 2 LAURA McDONALD 5-8-80 Int.#1849 LAURA McDONALD D.S.
- 3 ISAAC STONE 02
- 4 ISAAC STONE 5-14-85 B# ↓ ↓

- B1 INA GRAY 9-2-75 Int.#1333
- 2 JEFF SEAY 11-27-89 B#
- 3
- 4 GENEVA THURMAN

- C1 JOHN WALKER 8-15-63 Int.#369
- Open 2 Rev. Walter Anderson 03-12-05 — WALTER ANDERSON
- 3 DRUZÉY ANDERSON 2-22-85 B# ↓ ↓
- 4 MARY GIBBS 9-1-63 Int.#372

- D1 CALLIE DORSEY 12-21-61 Int.#252
- 2 EVELYN CALLOWAY 4-27-65 Int.#522
- 3 HATTIE B. JOHNSON 1-24-67 Int.#653
- 4 NATHAN ANDERSON 3-19-62 Int.#234

Dev 90 A#3
Wife is in Dev 89 B#3

- A1 Lillie Dortch 4-19-95 INT
- 2 ANNIE MAE THOMPSON 3-24-89 B#
- 3 WILLIAM P. DORTCH 7-15-75 Int.#1321
- 4 LAURA E. THOMPSON 5-17-75 Int.#1306

- B1
- 2
- 3
- 4

7/20/90
 Colo picked them 4
 said all used ?

ALBERTA LOVETT
 ↓ ↓

- C1

- 2 JERRY CHARK 7-3-87 B#
 - 3 FRANCES GOLLEDY 10-6-62 Int.#275
 - 4 Margaret Sumler 8-11-04
- PF 6-5-85 Anderson
 TIMOTHY TAYLOR

- D1 LUBERTIA BATES 11-30-64 Int.#482
- 2 SARAH H. HASSELL 10-19-71 Int.#999
- 3 JAMES W. HASSELL 1-8-94 * 9097
- 4 Rebecca Richmond 10-26-92

- A1 Rachel Allen 5-11-04 Deed To Rachel Allen 2-9-84
- 2 Change from 92-B - Mrs Alberta Lovett

- C1 charge from 92B - Mrs. Alberta Lovett
- 2 Change from 92B used site Franklin Bean 7/21/90 - one of Mrs. Alberta Lovett's

ch if in B or D to Mrs Lovett

- A1 LULA MAE RILEY 1-8-90 B#
- 2 WILLIE CHEEKS 9-19-87 B#
- 3 SALLIE LINDSEY 1-1-67 Int.#645
- 4 EIGHTA LINDSEY 3-10-63 Int.#625

- B1
 - 2 4/29/90 - for Rev for E. Ferguson ^{not enough space} in B4
 - 3 FANNIE FERGUSON 1-6-90 B#
 - 4 4/10/90 Not enough space for burial -
- JAMES FRANKLIN
↓ ↓
REV. J.E. FERGUSON
↓ ↓

- C1 ANNIE D. JONES 9064 9-22-93 *Annie B. Jones Lucille Davis*
- 2 MARGARET BROWN 11-13-86 B#
- 3 OLIVER HARRIS 4-16-76 Int.#1425 DT. 4/21/78
- 4 TIMOTHY K. KENDRICK

- D1 TIMOTHY K. KENDRICK 6-13-74 Int.#1223
- 2 Roberta Kendrick 4-21-00 et. TIMOTHY K. KENDRICK ^{4-24-78 DJ}
- 3 EARCUNE PHILLIPS 12-8-75 Int.#1353
- 4 MARIAN OSBORN 9-30-62 Int.#1069

- 1041B1 TIMOTHY'S MARKER MOVED TO THIS LOCATION ^(not interred here) 9-5-79
- 2 TIMOTHY KENDRICKS SR. B#1741 9-6-79
- 3
- 4

- A1 JOHN ECHOLS 10-13-74 Int.#1248
- 2 MARY TEEL 4-5-69 Int.#796
- 3 MELISSA WILCOX 11-22-60 Int.#156
- 4 LOUISA BRADLEY 2-21-65 Int.#502

- B1 EARNEST BRADLEY 3-30-85 B# ERNEST BRADLEY
- 2 SAM DUNCAN 1-5-69 Int.#772
- 3 ↓ ↓ removed on 3/6/90 could't be - ^{see 113A 1 on 2}
- 4 3/16/90 removed on this one CLIFFORD S. HOLLERS

- C1 ANNIE HOWARD 4-15-63 Int.#342
- 2 Ronnie Tribblett 5-20-08 JEROME GOODMAN
- 3 ALICE FOSTER 10-10-65 Int.#554
- 4 LILLIE WALKER 9-28-65 Int.#549

- D1 GEORGE DAVIS 11-14-59 Int.#106
- 2 GLADDIE GREEN 11-18-61 Int.#214
- 3 Phoebe Green 3-14-98 PHEONIE GREEN
- 4 WILLIE SMITH 1-24-65 Int.#496

- A1 CLIFFORD SHOLDERS 3-23-86 B# CLIFFORD SHOLDERS
- 2 CHANIE BEARD 10-9-62 Int.#276
- 3 GLADYS FOSTER 10-1-59 Int.#100
- 4 COLONEL FOSTER 6-30-68 Int.#735

- B1 ^{11/15/91} ^{Inter} Amanda Jones (Ophelia Garden and) Ophelia DANIEL GARDNER
Daniel Gardner Entered elsewhere
- 2
- 3 LILLIE GATEWOOD 9-6-69 Int.#837
- 4 ^{Inter} Walter Gatewood 11/26/90 ^{INT #90092} WALKER GATEWOOD

- C1 WARREN D. BOONE 4-11-72 Int.#1047
- 2
- 3 MARY V. POWELL 3-1-86 B# MARY POWELL
- 4 LEE CAPPS 4-6-72 Int.#1046

- D1 D.J. CLEVEN HATHAWAY VI-1957
- 2 MAG O. HATHAWAY D.J. 1957
- 3 JESSIE DUNN KP Jess Be DUNN 1-17-95 INT
- 4 NORWOOD DUNN 8-24-79 Int.#1735

- A1 Robert L. HARRIS *9068 10-2-93 ELENORA BRANDON
- 2 ELENORA BRANDON 1-26-62 Int.#230
- 3 FANNIE T. HILLARD 10-11-59 Int.#103
- 4 ROBERT HARRIS

- B1 ROBERT HARRIS
- 2 RUBY MURRAY 7-22-62 Int.#255
- 3 ROSIE ALLEN 1-30-71 Int.#947
- 4 LERNA MURRAY 7-12-59 Int.#93

- C1 MAGGIE BANKS 12-11-71 Int.#1016
- 2 ALICE SMITH 8-25-68 Int.#747
- 3 SUSIE TILLMAN 6-11-78 Int.#1605
- 4 DAVID TILLMAN 10-16-71 Int.#996

- D1 SALLY JOHNSON 1-30-80 Int.#1804
- 2 M.L. DOUGLAS 7-8-66 Int.#615
- 3 Sallie Glover 8-28-99 SALLIE GLOVER
- 4 EDGAR CLEMMONS 7-2-59 Int.#92

Falls
Dev.
98 B#2

- A1)
- 2)
- 3)
- 4)

SAMUEL CARPENTER
 ↓ ↓
 A.R. CARPENTER

- B1 DORA CARPENTER 2-2-80 Int.#1806
- 2 Sister Elder Carpenter 11/26/90 A.R. CARPENTER
- 3 DORTHULAR DENNER 6-26-76 Int.#1441
- 4 ADDIE BOSWELL

- C1)

- 2)
- 3)
- 4)

Jimmie Cooley 1-8-64

MRS. SAMMIE DAVIS 1-14-62 Int.#227

JANIE M. COOLEY
 ↓ ↓

- D1)

- 2)
- 3)
- 4)

Amelda Falls 7-28-05

~~Amelda~~ Vanessa Davis
 AMELDA FALLS
 ↓ ↓

Devotion

- A1) ELENORA McCLAIN 5-15-85 B# JAMES McCLAIN
- 2) JAMES McCLAIN 6-11-72 Int.#1063
- 3) ELLA MAE McCLAIN 9-19-83 B#
- 4) MATTIE M MACKAY 10-9-93 #9069 MATTIE MACKAY

- B1) ALEX CLARK 1-7-62 Int.#224
- 2) HESTER WARD 3-29-65 Int.#513
- 3) PERCY WARD 3-24-73 Int.#1131
- 4) ELDER JAMES JACKSON 3-5-66 Int.#586

- C1) GEORGE PEGUES 4-17-60 Int.#129
- 2) LILLIE PEGUES 2-20-77 Int.#1495
- 3) MAMIE BASS 10-1-79 Int.#1755
- 4) TISHIE PEGUES 12-8-64 Int.#486

- D1) GRANT PEGUES 5-23-71 Int.#967
- 2) JAMIE JONES
- 3) ALPHONSO JONES 4-4-69 Int.#802
- M 4) BLANCHE JONES 6-18-72 Int.#1065

A1 SAM J. DODD 12-23-79 Int.#1788
 2) RUBY LEE DOTSON 11-10-84 B# 2482 CLARENCE J. HARRIS
 3) SHERRY FORT PRYOR 8-1-88 B#
 4) AUGUSTINE ACEY SOWELL 4-25-87 B#

B1 MARGARET A. TAPPAN 7-27-85 B# CLARENCE J. HARRIS
 2)
 3) ALICE PARTEE MOORE 4-17-87 B#
 4)

C1 FLOYD COGER 5-10-69 Int.#806
 2 ELIZA BETH COGER 1-28-72 Int.#1021
 3 WALTER COGER 7-11-69 Int.#823
 4 ELIZA AYERS 6-6-65 Int.#528 ~~8/28/81~~
 Alpha C-4 occupied 6-13-98

~~10) CLARA BELL AYERS 4-19-84 B# FLETCHER AYERS~~
 1) CLARA BELL AYERS 4-19-84 B#
 3 Fletcher Ayers 5-8-03
 4 CARRIE MITCHELL 7-23-86 W 2722 ROBERT COOPER

CA Simmie Dotson 6-13-98 Int# 98-069

A1 SAM COLEMAN 5-31-75 Int.#1328
 2 CLARA SMITH 7-13-69 Int.#824
 3 HATTIE TONEY 11-15-71 Int.#1010
 4 REV. DAVID TONEY 1-25-62 Int.#229

B1 LULA DAVIS 2-4-68 Int.#702
 2 WILLIE JACKSON 6-15-71 Int.#915
 3 LURA WINGO 3-7-71 Int.#958
 4 E. NEWSUM 9-29-75 Int.#1331

C1) JOHN WARE
 2) ↓ ↓
 3) MARIE FUNCHES
 4 LOUIS FUNCHES 4-4-65 Int.#516

D1 ELYDA BROWN 10-7-73 Int.#1172
 2 PRIMUS BROWN 8-20-70 Int.#908
 3 Sidney Wingo 1-6-90 SIDNEY WINGO
 4 WILLIE M. SCRUGGS 2-24-66 Int.#585

A1 JAMES PAYNE 3-28-64 Int.#421
 2
 3
 4 HATTIE G. RETTER 8-4-68 Int.#743

LEONA POTTS

B1 JULIA MORTON 6-7-64 Int.#442
 2 ISIAH MORTON 2-5-65 Int.#498
 3 LEANNA SPARKMAN 3-29-73 Int.#1132
 4 REV. W.S. BUSBY 2-22-70 Int.#883

C1 LIONELL ROGERS 8-28-63 Int.#311
 2 ETHEL WALKER 6-30-81 Int.#2012
 3 SIDNEY WINGO 1-6-90 B#
 4 WILLIS THOMPSON 4-9-63 Int.#340

HENRI SAMRSON

D1 JERRY R. PRICE 4-11-64 Int.#426
 2 STEVE TURNAGE 9-21-81 B#2045
 3 DAISEY TURNAGE JACKSON 12-24-85 B#
 4

Daisy Jackson
 D.J. 10-8-6114

A1 JERRY CARLOCK 8-27-64 Int.#459
 2 Lucille Jackson Oliver 3-20-99 Int 99-040
 3 Warner

B.1. Mary B. Vanev 1-23-03
 2.
 3.
 4.

C1
 2
 3
 4

REV. CC. CARLOCK
 ↓ ↓

M A1 CLARA MATTHEW 12-14-96
 M 2 TOMMIE MATTHEWS 8-15-81 Int.#2025 TOMMIE MATTHEWS
 3 CORA HARRIS 1-20-66 Int.#570
 4 SAVANNAH GANT 11-15-71 Int.#1011

B1 JOE POPLAR 7-31-90 JOE POPLAR
 2 FRANK POPLAR 5-27-78 Int.#1599
 3 DELTA FERGUSON 3-29-74 Int.#1209-1
 4 HOUSTON FERGUSON 3-31-77 Int.#1501

C1 JOHN HARRIS 12-20-60 Int.#164
 2 ELLA V. JOYNER 11-29-65 Int.#524
 3
 4 JAMES MCCAIN

D1 ANNA ADAMS CAREY 4-16-60 Int.#128
 2 GEORGIA SMITH 10-12-69 Int.#847
 3 MARY HUBBARD 3-20-71 Int.#959
 4 WELTHA M. WILLIAMS 6-13-83 WELTHA WILLIAMS

104-1 B1 MARGARET BROWN 11-13-86 Int.#
 2 TIMOTHY KENDRICKS 9-6-79 Int.#1741
 3 MICHAEL WAYNE BOLTON 2-18-90 B#
 4 ERMA WHEELER 5-11-99
 D1 SHAWN BURSE 5-12-01 Mrs. Jessie Guggs 11-18-81
 2 SHIRLEY A. BURSE 8-3-02
 3 NEVA GRIGGS 3-9-88 B
 4 TODIE GRIGGS 1-31-84 B#

Not enough room!
 A1 PARTHEANNA LANGLEY 7-28-88 B# PARTHEANNA LANGLEY
 2 JOHN W. LANGLEY 5-7-66 Int.#601
 3 DANIEL HUNTER 3-20-66 Int.#591
 4 MINNIE O. THOMPSON 6-12-62 Int.#250

B1 DORA HENDERSON 11-22-67 Int.#691
 2 C.A. HENDERSON 6-15-64 Int.#444
 3 LEONA MANSON 2-14-60 Int.#116
 4 FRANK MANSON 2-14-60 Int.#115

C1 PARTHEANNA LANGLEY 7-28-88 B# (Obit # 59 B-1)
 2
 3
 4
 PHEOBIE WILLIAMS
 ↓ ↓
 EDITH ROSS

D1 Edith Ross 4-25-95 EDITH ROSS
 2 FLOYD ROSS 10-13-63 Int.#380
 3 FREDDIE MAE BOBO WILLIAMS 7-3-87 B# EDITH ROSS
 4 ESTELLE BROWN

- A1) Dorothy Douglas 10-17-08 Dorothy Douglas
- 2) ~~SURMATHRIC~~ BROWN 6-21-85 B# ↓ ↓
- 3) ADALD BROWN 11-12-76 Int.# 1470
- 4) WILLIAM BROWN 4-21-62 Int.# 244

- WIFE B1 JESSIE GRIGGS 12-27-86 B# JESSIE GRIGGS
- HUSB. 2) JESSIE GRIGGS 7-21-76 Int.# 1448
- 3) ↓ ↓
- 4) JAMES THOMPSON 6-12-59 Int.# 91

- C1 ESTELLA BROWN
- 2) MATTIE WOODS 4-10-60 Int.# 125
- 3) ISAAC HIGH TOWER 3-31-60 Int.# 1833
- 4) WARDELL BYRD 1-1-64 Int.# 402

- D1 WILLIE M. RICHMOND 1-25-76 Int.# 1404
- 2) RUTH McNEIL 3-28-72 Int.# 1042
- 3) ELDER EARLY R. McNEIL 6-13-67 Int.# 678
- 4) IRENE SARGENT 1-2-59 Int.# 67

- A1 MARY ANN CLARK 6-9-60 Int.# 139
- 2) RUBY WILLIAMS 6-2-85 B# RUBY WILLIAMS
- 3) FLORENCE PEEPLES 7-9-67 Int.# 682
- 4) JAMES PEEPLES 8-26-67 Int.# 664

- B1 LILLIAN WRIGHT 9-1-68 Int.# 748
 - 2) LUELLA PHILLIPS 2-27-73 Int.# 1124
 - 3) LILLIE MAE JONES 11-7-89 Int.#
 - 4) JOSEPHINE JONES 5-7-84 B#
- Int. # free instead of 1080*

- C1 Lottie M. Reed 2-25-93 LOTTIE M. REED
- 2) MARION REDD 4-16-60 Int.# 127
- 3) Lula Buchanan 1-12-84 LULA BUCHANAN
- 4) JAMES BUCHANAN 8-10-63 Int.# 367

- D1 MINNIE JONES 11-16-75 Int.# 1346
- 2) O.B. JONES 11-24-61 Int.# 216
- 3) BEATRICE OBANNON 3-16-78 Int.# 708
- 4) REV. M.J. OBANNON 1-23-66 Int.# 575

- A1 MADORA WALKER 1-21-73 Int. #1116
- 2 Susie Bryant 9-6-97 Int
- 3 HERBERT BYRANT 5-9-66 Int. #602
- 4 MAE FRANCIS ALLEN 3-6-69 Int. #788

- B1 MARIAM BRADLEY 2-26-61 Int. #174
- 2 Howard D. Scott 05-13-06
- 3 Ora B. Cross 3-27-04 JOE CROSS
- 4 ^{Solomon} JOE CROSS^{sr} 12-22-74 Int. #1269

- C1 CORDIA COLEMAN 9-10-68 Int. #787
- 2 HAYWOOD COLEMAN 2-13-72 Int. #1030
- 3 ↓ ↓
- 4

- D1 CHARLIE HARRIS 4-15-65 Int. #519
- 2 WILLIE HARRIS 12-21-60 Int. #163
- 3 FLORENCE WATKINS 4-23-61 Int. #184
- 4 ~~JOSEPHINE JONES 5-7-84 B#~~ JOSEPHINE JONES

Someone entered
Dec 10/73
5-2-84

- A1 LOUISE TOWNSEL 2-23-80 Int. #1818
- 2 JOHN TOWNSEL 10-21-63 Int. #385
- 3 CARRIE STITTIAN 10-5-65 Int. #553
- 4 JAMES SANDERS 5-13-62 Int. #245

- B1 BESSIE KIMBLE 12-22-74 Int. #1270
- 2 GRACIE COLLINS 3-9-61 Int. #662
- 3 THOMAS COLEMAN 1-11-69 Int. #774
- 4 ARLENE WASHINGTON 11-7-62 Int. #285

- C1 BEN GRAY 8-30-74 Int. #1237
- 2 MILLIE SHOATS 8-6-72 Int. #1078
- 3 FAYETTE MULLS 8-17-70 Int. #914
- 4 AARON ALLEN 5-10-69 Int. #805

- D1 ROBERTA LACY MARSHALL 3-18-84 B# ROBERTA LACY
- 2 FENNIE BECK 12-12-69 Int. #861
- 3 JOHN E. BECK 2-19-62 Int. #232
- 4 EMMA H. BROOKS 12-12-63 Int. #396

- A1 ELIZABETH PROCTER 11-28-64 Int.# 481
 - 2
 - 3 JOSEPHINE REDMOND 11-10-63 Int.# 390
 - 4
- WILLIE JACKSON

- B1 GENEVA GROVE 3-21-65 Int.# 511
- 2
- 3 *Dr. Percutis Houston* 1-11-92 *Bobbi Robinson for Percutis E. Houston* 8-27-85
- 4 WILLIE MAE HOUSTON 11-17-81 Int.# 2068

- C1
 - 2 EDDIE RAINY 9-9-73 Int.# 1165
 - 3
 - 4 ETHEL WALKER 9-5-80 Int.# 1888
- EDDIE RAINY
↓

- D1 RONALD WILLIAMS 8-30-75 Int.# 1332
 - 2 LEVI WILLIAMS 1-27-90 B#
 - 3 Sarah Jackson 05-14-05
 - 4) LUCILLE INGRAM 10-2-82 B#
- SARAH BETHEL

Devotion

- A1 ROBERT SMITH 2-10-79 Int.# 1682
- 2
- 3
- 4) EVELL Boyce 11-14-98 Int.# 98-127

- B1
 - 2
 - 3 Dorothy HEARD 11-25-96
 - 4 JOHANNIE HEARD 1-17-83 B# 2204
- EVELL BOYCE
↓ ↓
JOHANNIE HEARD
↓ ↓

- C1
 - 2 Dorothy Mackey 2-27-10
 - 3 ARNETT BOYCE 7-11-89 B#
 - 4 COLUMBUS MACKAY 5-28-62 Int.# 247
- MELVIN MACKAY
↓ ↓

- D1 ROSIE B. EVANS 9-5-63 Int.# 373
 - 2
 - 3
 - 4
- JAMES P. E.
ROBERT L. H.
↓

112

A1 Frances Wright 5-21-98 - 98-060
2 Carrie Henry 9-4-01

3
4

B1 Bobbie Hodges 1-24-03

C1

2
3
4

D1 Lillie M. Arnold 1-8-94 * 9101

2
3
4

Lula B. Jones 5-5-07

Devotion

A1 Roosevelt Cheney Sr. 12-30-00 ↓
2 used dated 95 B3 entered Bessie Duncan 3/16/90
3 Emmel + Etta Jackson
4 EMMAE JACKSON 5-6-95 INT ✓ 9-8-82

B1 JAMES WHEELER 8-28-66 Int.# 630
2 LILLIE WHEELER 4-17-68 Int.# 715
3 DUBOSE 9-5-67 Int.# 684
4 FRANK PATILLO 7-20-70 Int.# 905

4 1 MRS. LEATHA ANN BESS 4-4-77 Int.# 1503
3 2-8-84 Charlotte Crutcher
2
1

D

1 WANNIE MILLER 2-2-64 Int.# 409
2 LILLIAN T. HAYES 12-9-66 Int.# 640
5 LESLIE MILLER (BABY) 7-29-62 Int.# 259
3
4 ANDRE LAMAR BURSE 5-7-89 13#

A1
2
3
4

B1
2
3
4

C1
2
3
4

D1
2
3
4

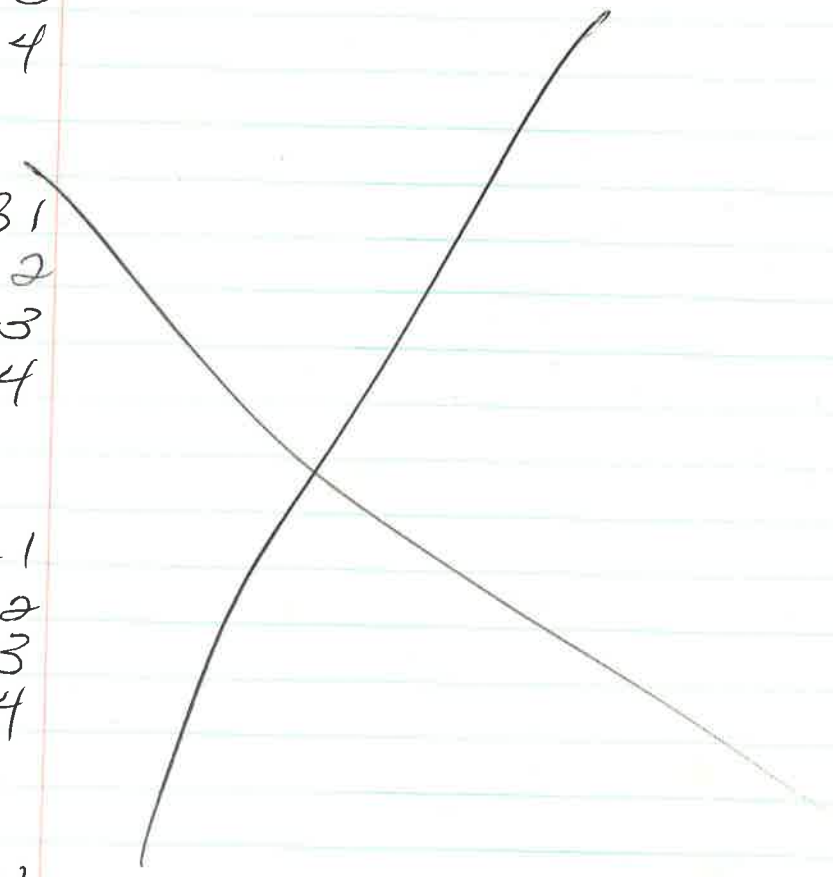


A1
2
3
4

B1
2
3
4

C1
2
3
4

D1
2
3
4



- A1 4-1-77 ~~name unknown~~
- 2 LIZZIE HUNTER 8-23-75 Int.#1328
- 3 ETHEL CONLEY 1-16-63 Int.#407
- 4 BEDFORD CONLEY 7-22-62 Int.#256

- B1 MRS. LUCY LEWIS 11-3-79 Int.#1770
- 2 JOHN LEWIS 3-13-60 Int.#118
- 3
- 4 Willie Bradford 5-8-08

Willie & Dorothy Bradford
 ↓ ↓
 CHARLES LEWIS

- Interment -
- C1
 - 2 ANTHONY ISOM 10-19-74 Int.#1251
 - 3 CAROLYN DAVIS 6-5-73 Int.#1148
 - 4 ERNESTINE PATILLO 4-4-71 Int.#961

- D1 ROBERT DAVIS 8-18-68 Int.#745
- 2 LEE DAVIS 12-11-72 Int.#1109
- 3 HULA DAVIS 8-21-81 Int.#2028
- 4 Infant space

- A1 Earline Heard - 9-28-02 GEORGE HEARD
- 2 GEORGE HEARD 4-5-72 Int.#1045
- 3 Margaret West
- 4 Kimmie Thompson Kimmie Thompson

- B1 WILLIAM HAMILTON 5-22-60 Int.#134
- 2
- 3 NOT FULL SIZE CHILD FANNIE HAMILTON
- 4 JOHN HORTON 6-6-59 Int.#90

- C1 Annre Hooks 3-26-98 Int.#98-035 L HOOKS
- 2 ORELL HOOKS 5-29-71 Int.#969
- 3 Alice Thompson 12-17-04
- 4 Bernard Hampton 12-18-04

- D1 LULAS. SCRUGGS 6-19-73 Int.#1150-1
- 2 WILLIE S. SCRUGGS 9-9-69 Int.#838
- 3 THELMA ARNOLD 6-11-60 Int.#140
- 4 ED LANG 5-26-60 Int.#135

76
74
112
2
H6 118 for ill look on next page

A1 ROBERTA ANTHONY 11-7-63 Int. #389

2 Sallie Mae Gooch Bolden 12-23-04

M 3 ELIZABETH PARKER 6-18-86 B# Ruby Allen

4 Inter Katie Rayford 2/27/92

B1 LUE ELLA HILL 11-3-69 Int. #853

2 WILLIE T. HILL 1-27-79 Int. #1673

3

open 4 Freddie Dorsey 4-19-08

CORNELIUS DORSEY

C1 ROBERT TAYLOR 10-13-68 Int. #755

2 Fannie Taylor 2-10-00 et

3 ADA GREEK 5-20-64 Int. #4134

4 JAMES WAYNE HILL B#2029 8-22-81

D1 WALTER GARNETT 11-18-61 Int. #213

2

3 Jim Brown 8-6-61 Int. #2001

4

WALTER GARNETT

731
130
H7119
A1 JESSIE GRIFFIN 6-19-74 #1224

2 RUTH WARD 5-14-70 Int. #891

3 Julia Miller 5-14-83

JULIA MILLER

4 DERRICK LANCE 12-9-61 Int. #221

B1 TRAVIS INGRAM 5-29-64 Int. #435

2 JOHN INGRAM 9-8-73 Int. #1164

3

MARCUA WASHINGTON

4 LELAND WASHINGTON 10-24-73 Int. #1174

C1

JOSEPH BROWN

2 EMMA JENKINS 3-16-70 Int. #877

3 ALCUAN JOHNSON 3-13-65 Int. #508

4 GERTRUDE RICE 9-11-61 Int. #206

D1

REV. C. HAMILTON

2

3 LOUELLA FOREHAND 11-2-61 Int. #212

4 EMMA WALKER PERRY HARRIS 8-17-86 B# EMMA WALKER PERRY

118 116

See 116 for 118

- A1
- 2
- 3 Herman C. WINBUSH 12-3-85 B#
- 4 ELMER ELLIS 8-14-60 Int.#142

DOUGLAS YOUNG
↓ ↓

- B1 ETHEL MORRIS 6-11-60 Int.#153
- 2 JAKE ANTHONY 7-23-63 Int.#359
- 3 ELDER J. THORNTON 2-20-71 Int.#953
- 4 LULA AUSTIN 5-1-63 Int.#345

- C1 REBECCA WINFREY 7-21-83 B# REBECCA WINFREY
- 2 JOSEPHINE SANDERS 5-26-63 Int.#350
- 3 HENRY SANDERS 6-5-66 Int.#609
- 4 LIZZIE WINBUSH 3-1-75 Int.#1289

- D1 Jostt WINBUSH 4-19-75 Int.#1298
- 2 ROSIE WILLIAMS 1-7-62 Int.#225
- 3 WILL WILLIAMS 9-14-72 Int.#1086
- 4 MARVIN MCKINNEY 7-9-71 Int.#980

119 117

127

See 117 for 119

- A1 NANCY CRAWFORD 8-3-66 Int.#621
- M 2 WILL C. MACKLIN 1-4-76 Int.#1401
- 3 ROBERT MACKLIN 4-25-86 B#
- 4 BARBARA HARRELL 1-31-81 Int.#1958

- B1 SILAS HARRELL 9-15-74 Int.#1241
- 2 *Inter Maxine Jamerson 6/30/90* MANUEL JAMERSON
- 3 MANUEL JAMERSON 3-4-78 Int.#1573
- 4 MARY E. MASON 11-17-71 Int.#1012

- C1 NIGEL MCKINNEY 6-7-68 Int.#730
- 2 BABE MCKINNEY 4-28-80 Int.#1847
- 3 Dwight m ↓ ↓
- 4 Jessie Wiggins 1-23-98 AUGUSTA ROBERTS

- D1
- 2 Augusta Roberts 11-5-94 AUGUSTA ROBERTS ↓ ↓
- 3 Willie Lou Pratcher WILLIE PRATCHER
- 4 ALEX PRATCHER 3-19-69 Int.#791

- A1 ROSIEL WRIGHT 12-30-66 Int. #644
- 2 LEOLA BASS 11-27-85 B# DOROTHY JOHNSON
- 3 FERRY INGRAM 9-13-64 Int. #465
- 4 ROSA BOYD

- M B1 VIVIAN ANDERSON 12-13-69 Int. #860
- 2 WILLIAM ANDERSON 5-22-85 B#
- 3 Russell Ray Anderson 2-17-03 RUSSELL ANDERSON
- 4 ↓ ↓ D.T.

- C1 James Lee 7-17-87 B# Mabel Lee
- 2
- 3 FELIX ROGERS 12-27-75 Int. #1357
- 4 JIMMIE CARTER 2-25-68 Int. #705

- D1 HATTIE BRANCH (HILLARD) 3-9-80 Int. #1823 HATTIE D. HILLARD
- 2 ↓ ↓
- M 3 JOSEPH ANDERSON 12-28-87 B#
- 4 ESTELLE COOK 5-29-67 Int. #675

- A1 Johnnie A. Morehead 3-5-94 #9119 JOHNIE A. MOREHEAD
- 2 ↓ ↓
- 3 JESSIE LEE SMITH 1-13-66 Int. #571
- 4

- B1 BABY SHUNRA JAMES 4-8-66 Int. #594
- 2 MATTIE PLUMMER
- 3 ↓ P.F.
- 4 BESSIE M. CUMMINGS 2-24-93 L.M. #9004

- C1 BERNICE STRICKLAND
- 2 ↓ ↓
- 3
- 4 JAMES WALLACE

- D1 Antie Mary Wallace 11/7/91 JAMES WALLACE D.T.
- 2 JAMES WALLACE 8-15-71 Int. #989
- 3
- 4 Estella Anderson - 8-10-02

- A1 LILLIE B. REID 5-23-81 Int.#2002
- 2 JOHNNIE REID 7-28-81 B# JOHNNIE REID
- 3 EDWARD ARNOLD 2-7-75 Int.#1279
- 4 DORIS LOUISE ARNOLD 4-18-70 Int.#888

- B1 FRANCIS BROOKS 3-17-98
- 2 FREDONIA POSTELL 1-23-66 Int.#574
- 3 HATTIE JONES 11-3-68 Int.#759
- 4 MATTHEW SMITH 8-4-64 Int.#455

- of summer open + closing - open Samuel Garner
 open + closing -
 Dec 104A 104A
~~3 JOHNNIE MATTHEWS 8-15-81 Int.#~~ MATTHEWS JAS. ✓
 4 ESTELLA GARNER 7-2-80 Int.# 1867

- D1 ELDER W.E. GARDNER 3-31-64 Int.#422
- 2
- 3 ALICE FOOTE 7-22-68 Int.#741
- 4 ARTHUR FOOTE 1-6-67 Int.#648

104-104 }
 2 }
 3 }
 4 }
 122-122 }
 1 }
 2 }
 3 }
 4 }

4 ETHEL CAPLE 5-10-88 B#

Samuel Garner
 ↓
 JAMES LEWIS
 ↓
 Elgin Crutchfield
 ↓

- A1 Someone Interred, 10-10-81
- 2 FLORENCE ALLEN 5-3-86 B# JENNIE STERLING
FLORENCE ALLEN
- 3 ANNIE DOMMELL 3-30-61 Int.#179
- 4 JOHN JACKSON 5-21-66 Int.#605

- B1 JENNIE STERLING 10-10-81 Int.#2054 JAMES TAYLOR
- 2 WILL WARD 6-23-77 Int.#1524
- 3 Henrietta Ward 1-98 Int.#14 HENRIETTA WARD
- 4

- C1 BESSIE T. EVANS 3-31-68 Int.#712
- 2 ERNEST L. YOUNG
- 3 ↓ ↓
- 4 WILLIAM B. FOOTE 3-5-62 Int.#233

- D1 ALICE GIBSON 7-6-75 Int.#1315
- 2 RICHARD GIBSON 1-2-78 Int.#1556
- 3 MARGUERITE FOOTE 2-17-84 B#
- 4 OLLIE ELDERS 11-18-58 Int.#62

- A1 FANNIE PAYNE 11-3-74 Int. # 1259
- 2 JESSIE R. SHAW 6-13-64 Int. # 443
- 3 Nellie Murrell 10-21-06
- 4 CORA LEE SANDERS 7-7-88 B# 3129 JOHN SANDERS

- B1 JOHN SANDERS 3-3-85 B#
 - 2 Julia Butler 7-15-99
 - 3 ISAIH BUTLER 10-30-71 Int. # 1004
 - 4
- JOHN SANDERS
ISIAH BUTLER
↓

- C3 FREEMAN SANDERS 3-14-89 B# SALLY HARPER
- 1 SALLY HARPER GUEST 5-29-70 Int. # 895
- 2 CLAVIN GUEST 5-29-70 Int. # 896
- 4 EMMA STRATTON 3-58 Int. # 45

- M D1 Dorothy Stiger 12-16-90 Int. SILVESTER STIGER
- M 2 SILVESTER STIGER 4-24-88 B#
- 3 CORA RAIFORD 2-17-63 Int. # 311
- 4 WALTER RAIFORD 2-13-66 Int. # 580

- A1
 - 2 WESLEY GARMON 6-9-68 Int. # 731
 - 3 ANNIE GARMON 7-29-89 B#
 - 4 GEORGE H. JOHNSON 6-11-62 Int. # 249
- ISIAH BUTLER

- B1 ALZONRA SIMS 8-8-66 Int. # 620
 - 2
 - 3 Rosie Alexander 10-6-01
 - 4
- OLIVER SIMS
ROSIE ALEXANDER
MYRLE BROOME

- C1 Josephine Buckley 5-30-93 Lm 9026 JOSEPHINE BUCKLEY
- 2 CHARLIE BUCKLEY 9-13-64 Int. # 464
- 3 DAISY EDWARDS 8-30-81 Int. # 2033
- 4 Lucy Bell Chambers - 9/28/00 LUCY B. CHAMBERS

- D1 Anker Annie Bell Dixon 5/30/92 -
- 2 MAZELLA SALVANT 6-22-70 Int. # 902
- 3 Mable Johnson 5-15-00 et
- 4

A1 F
2 E
3 I
4 C

- A1 ETHEL CHILDS 9-24-84 B#
- 2 REBECCA BLARELY 4-3-68 Int.#713
- 3 ADLINE YOUNG 12-12-65 Int.#566
- 4 JAMES BUCKLEY 1-8-73 Int.#1156

M. J. EDWARDS
STERLING
SUSIE CLARK

- B1 Sallie Buckley 4-3-97 Int SALLIE BUCKLEY
- 2
- 3 ROOSEVELT DICKERSON 3-1-19 Int.#1689
- 4

ROOSEVELT DICKERSON

B15
2
3
4

- C1
- 2
- 3 SHENARUA JOHNSON 11-12-78 Int.#1656
- 4 Eddie Johnson 3-14-06 EDDIE JOHNSON

CLIFFORD BRADY

1
2

- D1 MARY MCKAY B#
- 2
- 3 JENNIE LEE AUSTIN 1976
- 4 CERTRUDE F. AGEE 9-24-83 B#

M
M

Devotion

- A1 Mary Norris 11-26-78 Int 8079 RANSOM
- 2 FANNIE SIMMONS 9-30-62 Int.
- 3 WALLACE SIMMONS 8-13-74 Int
- 4 L. J. HAYES 7-28-01

- B1 JEROME O. LANE 4-25-61 Int.#590
- 2
- 3
- 4

Barbara Buckley

- C1 CHOATE MOORE 8-9-86 B#
- 2
- 3 PERCY WATSON 12-24-83 B#
- 4 TASH OSBORN 4-27-69 Int.#

- D1 ANNIE MAE MOORE 5-4-80 Int.#1818
- 2 CHARLIE MOORE 7-16-83
- 3 SOPHIA ROBINSON 9-10-78 Int.#
- 4 ROBERT ROBERTSON 2-13-79 Int.

A1
2
3
4

OLIVIA RANSOM
↓ ↓

Barbara Buckley
345-1221

B1
2
3
4

(BABY) JEWELL BROOME 3-19-66 Int. #590

DAISY M. BROOME

C1
2
3
4

VICTORIA JEMMISON 12-7-72 Int. #1106
J.B. MCBRIDE 3- -76 Int. #1418

CHARLOTTE VERSEY
D.I. 7-75

01 ARTHUR MACKLIN 5-10-95

2
3 SAM MORRIS 8-11-82 SAM MORRIS
4 BLANCHE MORRIS 5-5-68 Int. #758

LUE BANKS 4-1-63 Int. #336
PAULINE WILDER 9-11-96
LIMMER TRAYLOR 9-1-76 Int. #1457-1
ALBERT TRAYLOR 7-25-69 Int. #830

ELLA JOHNSON 2-10-64 Int. #411
ROBERT ROBERTS 5-17-64 Int. #433
ROOKS 12-1-79 Int. #1780
STEPHNEY 3-1-64 Int. #417

A BELTON 7-31-75 Int. #1325
GIA BELL 8-23-64 Int. #458
ALLEN 10-17-77 Int. #1545
ALLEN 12-10-61 Int. #218

MAGGIE MOORE 7-3-63 Int. #356
TOMMIE MOORE 3-24-79 Int. #1696
ROBERTS 4-4-70 Int. #885
SAM A. ROGERS 5-21-67 Int. #673

A1
2
3
4

OLIVIA RANSOM
↓ ↓

B1
2
3
4

(BABY) JEWELL BROOME 3-19-66 Int. #590

DAISY M. BROOME

C1
2
3
4

VICTORIA JEMMISON 12-7-72 Int. #1106
J.B. MCBRIDE 3- -76 Int. #1418

CHARLOTTE VERSEY
D.E. 7-23

01 ARTHUR MACKLIN 5-10-95

2 SAM MORRIS 8-11-82 SAM MORRIS
4 BLANCHE MORRIS 5-5-68 Int. #758

Barbara Buckley
3455-1221

WIE BANKS 4-1-63 Int. #336
PAULINE WILDER 9-11-96
LIMMER TRAYLOR 9-1-76 Int. #1457-1
ALBERT TRAYLOR 7-25-69 Int. #830

ELLA JOHNSON 2-10-64 Int. #411
ROBERT ROGERS 5-17-64 Int. #433
ROOKS 12-1-79 Int. #1780
STEPHNEY 3-1-64 Int. #417

A BETTON 7-31-75 Int. #1325
GIA BELL 8-23-64 Int. #458
ALLEN 10-11-77 Int. #1545
ALLEN 12-10-61 Int. #218

MAGGIE MOORE 7-3-63 Int. #356
TOMMIE MOORE 3-24-79 Int. #1696
ROBERT ROGERS 4-4-70 Int. #885
SAM A. ROGERS 5-21-67 Int. #673

Lot 84-1

A 1
 2
 3
 4 ORA LEE STEWART 8-4-87 B#

B 1 Kenneth Ingram II 2-4-06
 2 Kenneth Ingram 2-16-04
 3
 4 Ora Lee Stewart

C 1
 2
 3
 4

D 1 Pauline Briggs 8-17-05
 2
 3
 4

Lot 56-1

A- 2
 3 MARY CAMPBELL 8-28-93 Perry + Mary Campbell # 9050
 4 Mrs John Perry Campbell 12/6/91

B 1
 2 Lorraine Buford 9-10-87
 3 Frank Giles took part
 4

C 1 DORA F. JONES 6-27-88 B#
 2 GEORGIA WASHINGTON 6-17-88 B#
 3 Ora L. White
 4 ORA L. WHITE 10-29-87 B#

D 1 Lottie Jackson 9-19-87 B#
 2
 3 Frank Giles 5-21-87
 4

Lot 56-2
A

1
2
3
4

B

1
2
3
4

C

1
2
3
4

LEWIS IOLA Lewis - 3-1-98 Res. Mr. Lewis

D 1 ARTHUR LEWIS 11-6-88 B#

2
3
4

~~Henrietta Shores 2-27-95~~

BIRTHURMN SHORES 9-7-88 B#

open

Henrietta Shores 9-7-88

Shores

Lot 65-1

Lot 65-2

A 1
2
3
4

B 1 } Robert Little III 8-4-01
2 }
3 }
4 }

Cubie Mathis 7-14-89
Ira Bell 7-14-89
↓

C 1
2
3
4

For: Nellie Anderson PIF!
5-30-97
↓

D 1
2
3
4

58-1

A.1.

2.

3 Alvin Cannon 3-29-03

4. Laura Michelle McKinney 2-16-02.

47-1

- A 1.
- 2
- 3
- 4

Mrs. Mamie Harris
3-19-1918
April 22, 1996
32-C Ceth.